

MISTLETOE EXPRESS

A FRONT PORCH COMMUNITY IN A HISTORIC DISTRICT



www.mistletoeheights.org

February/March 2022

Letter From the MHA President

by Mark Philpot



Mark Philpot, President, and family

Saturday, April 16th – Easter Egg Hunt, 10 a.m. at

Newby Park – I look forward to seeing everyone there!

Saturday, April 23rd – Garage Sale w/Berkeley Place

*Details to follow

Hopefully we'll be able to bring back more events in the Summer – in-home neighborhood meetings, front porch gatherings, etc.

A few quick thoughts on the Lily B Centennial and the investing in your neighborhood: I wanted to take a moment and highlight the Centennial Celebration from Lily B Clayton. Of course for years I've seen dads and moms walk their kids down Jerome (then often walk back with scooters over their shoulder) and this year I've started with our 5th grader,

Neighbors,

As we move into the spring, I wanted to make special note of a few things coming up as we try to usher in some normative Mistletoe Heights gatherings in person, so mark your calendars:

Schaeffer, (though lately we've been driving because we're late, but that's a different story!).

Dads' Club head, Marcus Walters, happened to ask if a couple of Lily B dads could assist in digging for something at school and I thought I'd jump in, grab a shovel and do my part. Well, I was taken aback when we worked on digging up a time capsule from 1992 as part of the Lily B Clayton Centennial Celebration.

While 1992 doesn't seem like THAT long ago, it was wonderful to see the fabric that holds this community together, in full view. I saw Gary Willis and Taylor Willis on stage, Graham Brizendine and Kris Gililand helped dig up the capsule, Dads' Club leader Marcus Walters organized, Price Hulsey and family attended, and we found out he supplied the time capsule and men to do the work 30 years ago ... and that's just who I happened to catch at the presentation!

I was reminded anew that community involvement matters – it doesn't have to be at Lily B, of course, but neighbor to neighbor, street to street, the neighborhood is built on what can be, in some cases, decades of relational investment.

I've said it before – whether it's beers on the porch with your neighbors, volunteering at the PTA, walking over to see if you can give a hand as your neighbor is moving some furniture, volunteering at the library, etc., those are the investments that pay dividends and make this neighborhood, and Fort Worth, what it is!

Here's to more of that, MH!



Historic overlay helps preserve character of the neighborhood

Mistletoe Heights is a historic neighborhood, dating from the 1910s.

Wishing to preserve its architectural heritage and identity, most of the neighborhood is included in a historic overlay.

Any alterations or additions to the structures should be submitted to the neighborhood Historic Preservation Committee and must be approved by the city of Fort Worth's Historic & Cultural Landmarks Commission (HCLC).

Neighborhood Historic Preservation Committee: Brad Shuffield, 972-989-0247.

Historic & Cultural Landmarks Commission: Murray Miller, 817-392-8574, or Justin Newhart, 817-392-8037. The commission meets the second Monday of the month.

For further information, please refer to the Mistletoe Heights website, www.mistletoeheights.org, and click on Historic Guidelines.

The Centennial Celebration is Back On!

What:	The Mistletoe Heights Neighborhood 100th Plus Birthday Celebration
When:	Sunday, April 24, 2022
Where:	The Triangle
Home Tours:	3-5 PM
Celebration:	5-7 PM
Rain Date:	Sunday, May 1, 2022



Things have changed quite a bit in the last 100 years, not to mention the last year and a half. We are excited to again plan to celebrate our wonderful neighborhood, whether your home is one year or one hundred years young. We need your help with a few items listed below.

- **Home tours:** Anyone interested in opening a part or all of your home, contact info is below. We had volunteers 18 months ago, but we realize things are a bit different these days.
- **Food trucks:** Anyone, or a group of people, interested in underwriting all or part of the planned food service.
- **Volunteers:** We have several opportunities from being a docent doing an outside script reading on 2-3 houses, to helping with games or children, or serving during the celebration.

Leslie Houston contact info: Email: lltexas@aol.com
Phone: 817-917-6563

From your Celebration Committee: We will continue to provide updates and more information as the date gets closer. We look forward to seeing everyone!

Fire Station Park Update

Let's Roll! Fire Station Park is fully funded and moving to construction!

On a beautifully sunny January 12, the Near Southside community came together to sip hot chocolate and celebrate the fantastic news that the Fire Station Park dream will soon become reality.

The Near Southside, Inc. (NSI) team worked hard to raise the \$600k needed to trigger an equal match by the City of Fort Worth, and the event celebrated a very generous donation of \$300k from Dickies and The VF Foundation (philanthropic arm of Dickies parent company) that allowed us to reach that lofty goal. Their primary sponsorship grant was followed by generous gifts from the Scott Foundation, Ryan Foundation, Meta Alice Keith Bratten Foundation, and the Amon Carter Foundation – and that wasn't the end of the story.

Heartwarming contributions came through a grassroots fundraising effort, led by the local skate community and Magnolia Skate Shop, that brought our total to \$680,000, far exceeding our initial goal. NSI will continue to work with the City of Fort Worth as they select a contractor and begin construction this spring. The goal is to have the skate park portion of the park completed by October 2022. Design team includes Pacheco Koch and New Line Skateparks.

More Fire Station Park information including updated design, renderings, and video, visit <https://www.nearsouthsidefw.org/fsp>.



Messages of Hopes and Dreams Revealed as Fort Worth Elementary School Unearths 30-year-old Time Capsule

To an elementary student, 30 years might seem like eons ago. But as the students, staff, and parents unearthed a time capsule from 1992 outside Lily B. Clayton Elementary in Fort Worth, they found out the hopes and dreams then were very much the same as they are now.

The audio cassette tapes, though — that's a slightly different story.

Lily B. Clayton, first known as Mistletoe Heights Elementary, is celebrating its 100th birthday this month. The landmark — first home to just 79 students in a four-room schoolhouse in 1922 — is now home to more than 500 pre-K through fifth grade students.

But, in 1992, they placed a time capsule in the ground next to the flagpole with instructions to open it on Feb. 17, 2022.

Two PTA dads removed the bronze plaque and removed a 3-foot-long section of large PVC pipe. Once they carried it inside the school auditorium, two school employees who actually helped bury it those 30 years ago used a battery-powered saw to open it.

To the cheers of students, staff, and parents, several zip-locked bags of cards, letters, and artwork spilled out. Teachers took turns reading them out loud, including a telling technological message from the school secretary in 1992.

"We have a Tandy 2500 XL/2, that will eventually be used to do all of the procedures that have to do with reports, mail etc.," a staff member read as the crowd laughed. That "state of the art" mode of computer operated on roughly 256KB of RAM.

But in all the messages,



one read by another teacher stood out. By Kevin Reece, WFAA

"It is my hope that in 2022, that all races will have tapped their reservoir of passion to realize the importance of getting along with each other and living in peace and harmony," a staff member wrote in 1992.

Harmony that the current principal wants today's kids to keep striving for.

"We want them to understand the great traditions we've had here and understand the impact that they've had on students for over 30 years," said principal Kate Anderson.

There was one more treasure: an audio cassette that had a recorded message from a fifth grade class in 1992. The problem was they couldn't find a working cassette player to play it on.

That treasure, as the school continues its month-long celebration of its place and impact in the communities of Mistletoe Heights and Berkeley Place, will have to wait until Friday.

"Lily B. is the heart of the Berkeley Place and Mistletoe Heights neighborhoods and an asset that continues to draw both alumni and new families to this historic community," said Lisa Mocek, the

school's PTA historian, who is spearheading celebration planning. "Our teachers, administrators, and families do an incredible job providing children the foundation they need to succeed in life. And the school connects all of us in ways that shape lifelong friendships."

Mistletoe Heights Neighborhood Meeting**February 15, 2022****7:00-8:30 pm****Venue: Zoom Meeting****Officers Present:**

President: Mark Philpot

Vice President: Corey Bearden

Treasurer: Jeri Jo Blackmon

Newsletter: Chloe Stern

Secretary: Val Ewing

Residents Present: 9**CALL TO ORDER:** 7:00 pm**Guest Speaker:**

Elizabeth Beck – Councilwoman District 9

Mike Brennan – Chamber of Commerce

MEETING AGENDA:**CALL TO ORDER/WELCOME:** 7:02 PM, by President Mark Philpot**APPROVAL OF MINUTES:** 7:04 PM, motion to approve, seconded, and approved.**OFFICER REPORTS:****Treasurer:** Jeri Jo Blackmon reported on the balance and provided a financial update.**NEW BUSINESS:**

Guest speaker Elizabeth Beck: City currently in the process of redistricting. Mistletoe Heights will stay in District 9. Next meeting will be March 10 at 6:30 Botanic Gardens. There is extra bond money set aside to rebuild the Forest Park Pool. Plan is for a 50-meter Olympic size swimming pool with zero entry area to cover all ages. Additional details will be discussed on March 10. Public input is needed so please attend! The bond election is May 7. Plan is for \$560 million to improve roads, parks, community centers, major park improvements, etc.

Guest speaker Mike Brennan: Mr. Brennan discussed updates on several items. TexRail line: currently a proposal to extend an additional stop to include near southside

station, currently Mistletoe Station, located south of Mistletoe Blvd. Mr. Brennan presented a map and provided an extensive description of the planned development. Significant guidance will come from the Trinity Rail Board Workshop held on March 2. **Next subject:** Quiet zone at MB and Jerome. A quiet zone has been approved. To qualify as a quiet zone, gates must be double sided with a median preventing cars from passing through when gates are down. TIFF money each year will pay for landscaping, watering, and establishing trees in the median area. **Next subject:** Mr. Brennan discussed changes to occur at 8th Avenue that will force cars to turn right only at the intersection of 8th and Mistletoe Blvd. **Next:** Fire Station Park, located at Hemphill Street and Allen, proposal for an expanded Fire Station Park. It's designed to accommodate a community center, skate park, bike track, and central green. A recent celebration kicked off to acknowledge fully funding of this park with the raising of close to 1.9 million to support budgeting this next phase.

OLD BUSINESS:

Mistletoe Heights Book Update: Book is in the editing phase with anticipation of this continuing on through summer.

Atmos Construction Concerns/Questions:

Contact Sam Ayala: (214) 316-4517 or samuel.ayala@atmosenergy.com

Lily B Donation 2022: MH donated \$650 in 2020, \$700 in 2021. Motion to donate \$700 this year. Seconded and approved.

VOLUNTEERS NEEDED:

Looking for volunteers to assist in MH website renovation, get bids, help propose a site build out, etc. If you are reading this and have time to volunteer, please consider reaching out, we'd love the help!

Meeting adjourned 8:11 PM

Stay Connected with Your Neighbors



Get connected. Be more engaged. Please share with us your experiences of good will in the neighborhood to newsletter@mistletoeheights.org or to president@mistletoeheights.org. Here are some ways to find out what's going on in the neighborhood:

- Facebook Chat Room**
facebook.com/groups/mhneighbors
- NextDoor Page**
mistletoeheights.nextdoor.com
- Webpage**
mistletoeheights.org/contacts

Welcome New Neighbors!

It's always a joy to meet our new friends down the street or around the block. Please remember that we only know if someone tells us, and we LOVE welcoming our new residents with a basket from the Mistletoe Heights community. If you are living close to a new family, please send us a call or text. Get to know them and send their names and addresses our way. If YOU are a new neighbor and have never received a welcome basket, please let us hear from you. The Front Porch Community is the best place to be, and we want to visit your porch soon.

All the best,
Kathy Jo Rogers 1101 Clara, 817.688.0905



Our commitment to character, integrity and professionalism remains uncompromised.

Rooted In Business | Leading You Home



Luxury Living | Commercial | Property Management

817.920.0000 | northerncrain.com

PLEASE DON'T FENCE ME IN

In case you didn't know, I'm more than just a Mistletoe Heights' area Realtor—I represent buyers and sellers all over Fort Worth, Tarrant County and beyond.

Call me with all your real estate needs & questions.

Gaye Reed

817-688-1952
gaye.reed@cbfw.com

March Events at the Southwest Regional Library

By Megan McBurnett, Library Assistant

All month, there are plenty of fun, educational things to do! We have programs about gardening, cultural events, crafting nights, a romance book club, fiction book club, 3D printing classes, and more. Spring Break is loaded with activities for all ages ranging from story times to painting classes to an adult spelling bee. We hope you will join us in our festivities!

Programs are open to the public and free everyone – even non-library card holders.

Fort Worth Public Library – Southwest Regional
4001 Library Lane • Fort Worth, TX 76109 • (817) 392-5860



MARCH

SOUTHWEST REGIONAL LIBRARY EVENT CALENDAR

DAY	EVENT		TIME
2 WED	Irish American Pre-K Story Time	Stories, songs, and activities	Youth 10:30 p.m.
3 THUR	Teen Game Hour	Board games - new and old	Teens 4:00 p.m.
5 SAT	Plant & Seed Swap	Gardening, seed swapping and plants	Adults 3:00 p.m.
6 SUN	Family Story Time	Stories, songs, and activities	Family 3:00 p.m.
8 TUE	3D Printing Basics	Learn how to use our 3D printer	Youth 4:00 p.m.
8 TUE	Get Lit Book Club	Fiction - The Mountains Sing by Nguyen Phan Que Mai	Adults 6:30 p.m.
9 WED	Pre-K Story Time	Stories, songs, and activities	Youth 10:30 a.m.
9 WED	Intro to Programming	Introduction to programming with Python	Adults 6:30 p.m.
10 THUR	Paint the Sidewalk	Practice mark-making and gross/fine motor skills	Youth 10:30 a.m.
11 FRI	Painted Flower Pots	Design your own plant pot	Adults 4:00 p.m.
12 SAT	Your Better Yard	Water-saving tricks, design, & plant placement	Adults 10:30 a.m.
13 SUN	Family Story Time	Stories, songs, and activities	Family 3:00 p.m.
14 MON	Family Game Hour	Battle it out on the game board	Family 4:00 p.m.
15 TUE	Silhouette Painting	Paint a silhouette & learn about color theory	Teens 1:00 p.m.
16 WED	Pre-K Story Time	Stories, songs, and activities	Youth 10:30 a.m.
17 THUR	Celtic Bodhrán Drums	Build a Celtic bodhrán drum	Youth 4:00 p.m.
20 SUN	Adult Spelling Bee	Sign up at the reference desk	Adults 1:00 p.m.
20 THUR	Family Story Time	Stories, songs, and activities	Family 3:00 p.m.
22 TUE	Bad Art Night	Create intentionally bad art	Youth 6:30 p.m.
23 WED	Pre-K Story Time	Stories, songs, and activities	Youth 10:30 a.m.
23 WED	Art of Letter Writing	Write a letter & design an envelope	Adults 6:30 p.m.
24 THUR	Under the Covers	Romance - My Very 90's Romance by Jenny Colgan	Adults 6:30 p.m.
26 SAT	Sow Your Sunflowers	Paper Sunflowers and seeds to plant	Youth 3:00 p.m.
27 SUN	Fairy Lanterns	Fairy homes for your littlest, magical friend	Youth 1:00 p.m.
27 SUN	Family Story Time	Stories, songs, and activities	Family 3:00 p.m.
30 WED	Pre-K Story Time	Stories, songs, and activities	Youth 10:30 a.m.

Mistletoe Heights Association Annual Dues Drive

All residents of Mistletoe Heights are members of the association and dues donations are completely voluntary. Any amount is welcomed and appreciated. Your dues fund a number of special projects as well as seasonal social gatherings, landscape maintenance, newsletter and directory publications.

Our annual dues drive begins in March and continues through December. You will see this flyer in our newsletters as we collect dues donations for our neighborhood association. We will also recognize donors in each newsletter beginning with the July newsletter through December with the final recognition published in our December/January issue.



Levels of giving for this year are:

- Mistletoe – up to \$49
- Holly - \$50 to \$99
- Magnolia - \$100 to \$149
- Poinsettia - \$150 and up

Thank you for supporting your neighborhood association. Together we can make Mistletoe Heights an even better place to live.

\$25 \$75 \$100 \$ 150+

Please return your dues donation to:
Mistletoe Heights Association
c/o Jeri Jo Blackmon
1408 Mistletoe Drive
Fort Worth, TX 76110

Name(s) _____
(As you prefer to be listed in the newsletter –
adult names only)

To donate by Pay Pal go to:
<http://www.mistletoeheights.org/dues.html>
and be sure to add your name(s) and address

Address: _____

Please check here if you wish your donation to remain anonymous

If you can volunteer some time to our association list your name and include a telephone number where we can reach you _____

How to Reach the Mistletoe Heights Officers:

President: Mark Philpot: mark@leaguere.com

Vice President: Corey Bearden:
michael.corey.bearden@gmail.com

Treasurer: Jeri Jo Blackmon: JeriJo@charter.net

Newsletter: Chloe Stern: chloeelisestern@gmail.com

Secretary: Val Ewing: agdoc05@hotmail.com

Join the Mistletoe Heights Email List

To subscribe to the Mistletoe Heights Residents mailing list, go to mistletoeheights.org, click on "Email List" and look for "Subscribing to Residents." Enter your name and email address, and then click "Subscribe."



Note: You may need to add residents-bounces@mistletoeheights.org to your address book to receive emails. If you have questions or concerns, contact moderator@mistletoeheights.org.

Check out our website: mistletoeheights.org

Friend us on Facebook: facebook.com/mistletoeheights


> edwardjones.com | Member SIPC



Working together for your financial future.



Bruce C Border, CFP®
Financial Advisor
2453 Forest Park Boulevard
Ft Worth, TX 76110
817-926-8056



Jessica Davis, AAMS®
Financial Advisor
2501 Parkview Dr Ste 203
Ft Worth, TX 76102
817-337-0723



In the City

Police non-emergency number: 817-392-4222

Crime updates are available to citizens at any time: fortworthpd.com. Go to crime information, then crime mapping.

Community engagement liaison: For our neighborhood, contact Tabitha Butler, 817-392-2045.
tabitha.butler@fortworthtexas.gov

Link to city online pothole reporting form:
<https://cityoffortworth.wufoo.com/forms/pothole.report>

Link to code compliance issues and to report graffiti:
fortworthtexas.gov/codecompliance/myFtWorth

Link to garbage related issues: www.fortworthtexas.gov.
Click on "Garbage and Recycling."
Bulk trash pickup for our neighborhood is the week of the fourth Monday of the month.

Link to report animal issues, control, adoption:
fortworthtexas.gov; or call 817-392-1234.

Link to request permit for garage sale:
Fortworthtexas.gov; or call 817-392-2222.

For travel health information and inoculations, call Tarrant County Public Health Department, Travel Health Services, 1101 S. Main St., Fort Worth, TX 76104.
817-321-4707

Fort Worth leash law:
<http://fortworthtexas.gov/animals/laws>

Fort Woof Dog Park:
<http://fortwoof.org>

Smart phone app: myFtWorth



Selling homes in your neighborhood since 2001
www.DFWStoryGroup.com



Story Group Real Estate

Mistletoe Recent Market Activity

Homes Sold - 7

Sold Price Range: \$374,900 - \$940,000

Average sold price per square foot: \$256/SF

Average days on market: 60



Ruth Story
 Broker
 Listing Specialist
 817.992.9232
 ruth@dfwstorygroup.com



Kati Van Cleave
 Broker Associate
 New Construction
 Specialist
 817.992.6817
 kati@dfwstorygroup.com



Canyon Van Cleave
 Buyer Specialist
 817.372.5099
 canyon@dfwstorygroup.com



DISHES ENCORE



Steele Craft



Ask About
**FREE
SHIPPING!**

Gifts, Decor & Dinnerware

3811 RUTLEDGE STREET (AT 3900 W. VICKERY)
FORT WORTH, TX 76107
WWW.DISHESENCORE.COM • 817-744-8548

Volunteers Always Welcome!

Are you new to the neighborhood and would like to get involved?
Volunteering is a great way to meet a lot of interesting neighbors!

Contact MHA President
Mark Philpot at president@mistletoeheights.com if you
are interested in volunteering.

What would you like to see in the newsletter?

We want your feedback! What topics would
you like to see in the newsletter? Send us your
suggestions: newsletter@mistletoeheights.org.

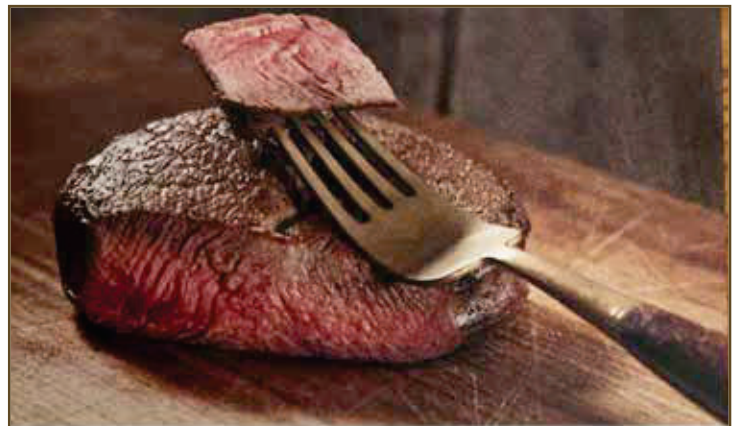
Jeri Jo Blackmon Professional Tax Services

817-923-4393

Email: JeriJo@charter.net
Enrolled Agent licensed by the IRS

1408 Mistletoe Drive
Fort Worth, TX 76110

Cell: 817-925-7833
Fax: 817-924-7733



Burgundy's Local Grass Fed Meat Market

DALLAS
3314 Ross Ave
CORNER ROSS
& HALL
972-707-7241

FT WORTH
3326 W 7th St
CULTURAL
DISTRICT
817-878-2722



YOUR
NEIGHBOR

Free Classifieds

As a MH resident, you get one free text-only ad per issue.

TUTOR

I am a public/private school educator with 23 years of experience. I currently teach 4th grade at The Oakridge School. I would love to help your child with reading, writing, or general Pre k-8th grade studies, and also 9-12 grade writing. Cost is \$50 for an hour, but I'd love to help anyone at a discounted rate/no charge if the cost is an issue. Zoom or a safe distance apart. Contact me, Kathy Jo Rogers, at 817.688.0905 or krogers@theoakridgeschool.org.

WILLS AND ESTATE PLANNING

Attorney Thomas McCracken offers affordable will/trust preparation and other estate planning with personal, neighborly service. Call/text 214-862-5612 or e-mail tmccracken@utexas.edu.

JUST PAWS PET SITTING SERVICES

Serving MISTLETOE HEIGHTS. CUSTOMIZED Services Tailored To Meet You & Your Pet's Needs. CALL or TEXT: JODY (817) 229-8342 *** References Available Upon Request***

TAX PREPARATION

Do you need your individual or business tax return prepared? Call Jeri Jo Blackmon, former IRS Agent and current Enrolled Agent licensed by the IRS. Also, if you have any issues or have received any letters from the IRS, she can represent you and resolve any tax problems you might have. Contact Jeri Jo Blackmon at 817-923-4393 or email JeriJo@Charter.net. 1408 Mistletoe Drive.

PIANO LESSONS

Lessons for beginners through intermediate levels, children and adults. "I've been a resident in Mistletoe Heights since 2008 and teaching piano since 1990. Please give me a call and leave a message at 817-927-8876. Thank you." Mary C. Smith • 2300 W. Magnolia Ave.

JW'S DETAILING SERVICES

Full auto detailing — call for pricing: Jimmy Wilcoxon, 682-272-1695 or contact jimmywilcoxon@gmail.com

HANDY IN THE 'HOOD!

Experienced handyman and Mistletoe Heights resident available to help with general household projects and repairs. Call or text Jamie McCoy at 817-657-5731.

PET SITTING

At-home mom who LOVES animals would love to help take care of yours! Please call Diana Brandenburg, 214-734-9140.

ODD JOBS/LAWNS/HOUSE SITTING/PET CARE

My name is Seth Rogers and I am a high school senior who has been doing dog sitting/walking and lawn care since sixth grade. I would love to help you with any laborious task, odd jobs, house sitting, or dog walking. Cost to be negotiated after the parameters of the job have been discussed. Contact: 817-600-2313 or sethman37@gmail.com.

GIDEON'S GOODIES

I sell delicious homemade fudge at the great price of \$6 per ½ lb! My name is Gideon Meade, and I am 11 years old. I started this baking business in 2019. I only sell fudge now, but I am perfecting my French macaron recipe and hope to have it ready soon. (If my family stops eating my samples). You can find out more and place orders at gideonsgoodies.wordpress.com

THE SAMINATOR

Need any laminating done? Let "The Saminator" take care of your order for small projects like insurance cards or keepsakes — anything 8 1/2 x 11 or smaller. Just text my mom at 817.688.0905 and I will promptly pick up and deliver. Thank you! Samuel Rogers, 1101 Clara St.

Support Our Advertisers

The officers of the Mistletoe Heights Association encourage you to support the businesses that advertise in our newsletter. These organizations pay to be in our newsletter and support our neighborhood. Their businesses also make this publication possible. Without them we would not be able to provide printed newsletters to every household in the neighborhood free of charge.

Advertising Submission Process

All ads must be paid for by the end of the month prior to the month in which the ad will appear. Artwork for all ads should also be submitted by the end of the month prior. Artwork should be emailed to: advertise@mistletoeheights.org. Should you have any questions, please email advertise@mistletoeheights.org

Helpful Phone Numbers, Emails, Addresses and Websites

City Information		Volunteers		2100 Weatherbee	
City Code violations	817.392.1234	Historic Preservation Committee		John Taggart	No # Provided
City of Fort Worth	817.392.2255	Susan Willis	817.924.4000	2100 Morphy	
fortworthtexas.gov		Melanie Smith	682.225.6921	Ben Connelly	No # Provided
Police—nonemergency	817.392.4222	Street Rep Captains		Forest Park Blvd.	
Garage sale permits	817.392.7851	Melissa Kohout (East side)	817.313.1419	Steve McReynolds	817.926.7955
Graffiti abatement	817.212.2700	Rosaline Eastepp Takes (West side)	817.475.3715	West of Forest Park	
Lily B. Clayton Elementary	817.922.6660	Welcome Baskets		2300 W. Rosedale South	
schools.fwisd.org/clayton		Kathy Jo Rogers	817.688.0905	Collin Wright	No # Provided
Paschal High School	817.814.5000	Advertising Manager		2300 Irwin	
paschalhs.org		advertise@mistletoeheights.org		Steve McReynolds	817.926.7955
Historical Preservation		Newby Park		2300 West Magnolia	
Justin Newhart	817.392.8037	Vacancy		Susan Pressley	817.923.6061
justin.newhart@fortworthtexas.gov		Email Moderator		2300/2400 Harrison	
Southside Preservation Hall		Richard Yantis	817.924.2857	Robert DeVargas	817.923.9393
Hallyes@earthlink.net	817.926.2800	Webmaster		2300 Edwin	
southsidepreservation.com		Scott Ewing	214.403.7762	Janis Arvin Carter	817.300.3708
The T/Longhorn Trolley	817.215.8600	Historian		Betty Arvin	No # Provided
the-t.com		Luke Ellis	817.339.2459	1100 Clara	
Trinity Railway Express	817.215.8600	Yard of the Month		Marc & Kathy Jo Rogers	817.923.3304
trinityrailwayexpress.org		Claudia Camp	817.924.5193	1200 Clara	
City Council District 9		Street Reps (listed by blocks)		Bryce & Allison Docker	817.223.2980
Elizabeth M. Beck	817.392.8809	East of Forest Park		1100 Buck	
district9@fortworthtexas.gov		2200 W. Rosedale South		Martin Herring	817.923.3843
MHA officers		Lysta Haynes	817.675.4163	1200/1300 Buck	
officers@mistletoeheights.org		2200 Irwin		Nickie Aubry	No # Provided
President		Gary Willis	817.797.7654	1100 Mistletoe Drive	
Mark Philpot	817.681.6681	2100/2200 Mistletoe Blvd.		Mark and Kellye Neuweiller	No # Provided
president@mistletoeheights.org		Melissa Kohout	817.313.1419	2300 Mistletoe Drive	
Vice President		2100/2200 West Magnolia		Chris Fershtand	817.923.8422
Corey Bearden	817.889.5032	Jason Lovelady		Neighborhood Police Officer	
vicepresident@mistletoeheights.org		2200 Harrison		Ray Azucena	
Secretary		Mary Ellen Peipert	817.614.9794	Work Cell	682.319.7613
Valerie Ewing	817.791.9535	2100 Harrison Ave.		Desk Phone	817.392.4709
secretary@mistletoeheights.org		Chris & Sawyer Taylor	817.201.5320	RayChristian.Azucena@fortworthtexas.gov	
Treasurer		2100 Mistletoe Ave.			
Jeri Jo Blackmon	817.923.4393	Pat Hale	817.924.5263		
treasurer@mistletoeheights.org		2200 Mistletoe Ave.			
Newsletter Editor		Richard & Christi Yantis	817.924.2857		
Chloe Stern	512.784.0530	2100/2200 Edwin			
newsletter@mistletoeheights.org		Katrina Pittman	817.921.2221		

MHA Yearly Memberships

Voluntary dues are \$15, \$25, \$50 or whatever you can afford. Your dues help pay for this newsletter, the Mistletoe Heights phone directory, and many neighborhood functions. Please make your check payable to: Mistletoe Heights Association. Mail to: Jeri Jo Blackmon, 1408 Mistletoe Drive.

Free Classified Ads

As a MH resident, you get one free classified ad. Please submit copy by the 15th of the month. Notify the editor by email: newsletter@mistletoeheights.org.

Editorial Policy

Articles and letters to the editor are welcomed. To be published as written, letters must be addressed to the editor, signed, and include a phone number.

Anonymous letters will not be published. Articles may be submitted for publication, signed or unsigned, subject to approval and editing.

Contact information helps, especially if we have questions for you.

Letters to the editor are limited to a half-page (approximately 350 words).

Please send email to:

newsletter@mistletoeheights.org.

Advertising Information

To place an advertisement or for actual mechanical sizes, please email: newsletter@mistletoeheights.org
 Business-card size \$25
 1/4 page \$50
 Half page \$100
 Full page \$200
 Pre-printed inserts \$100
 8 1/2 x 11
 Deadline for ads, payment, and artwork is the 15th of the month.